

ELOTEST B300

Multi-frequency eddy current test system with up to 4 channels

Universally applicable

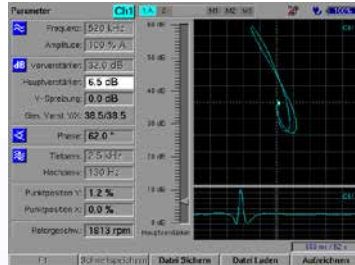


Eddy Current Test Instruments and Systems

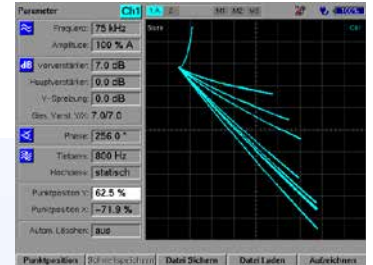
ELOTEST B300

for laboratory, training and mobile use

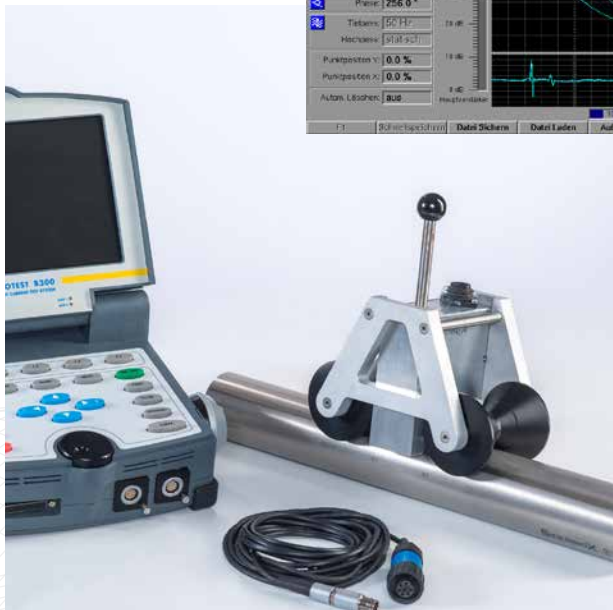
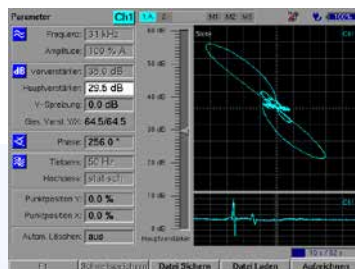
The ELOTEST B300 universal eddy-current test instrument offers numerous application possibilities.



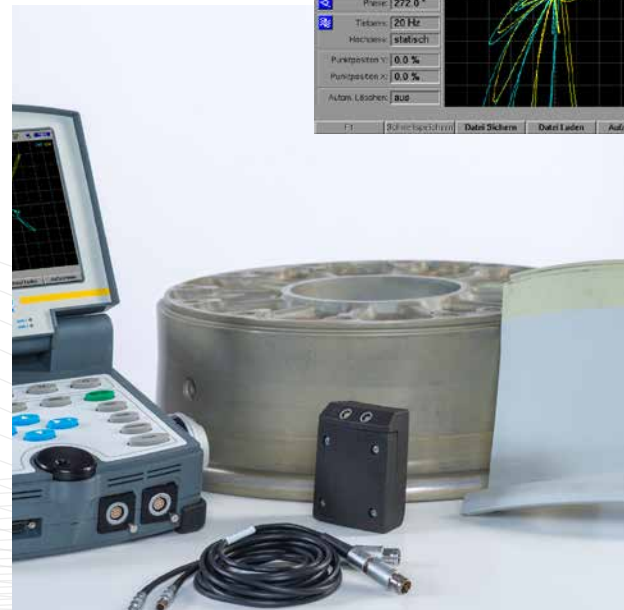
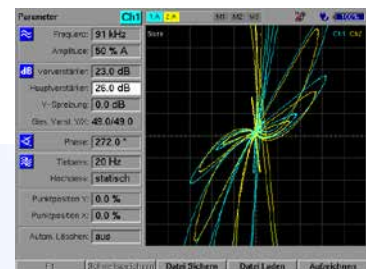
ELOTEST B300 and HDR-18 Rotor – dynamic testing with rotating sensors



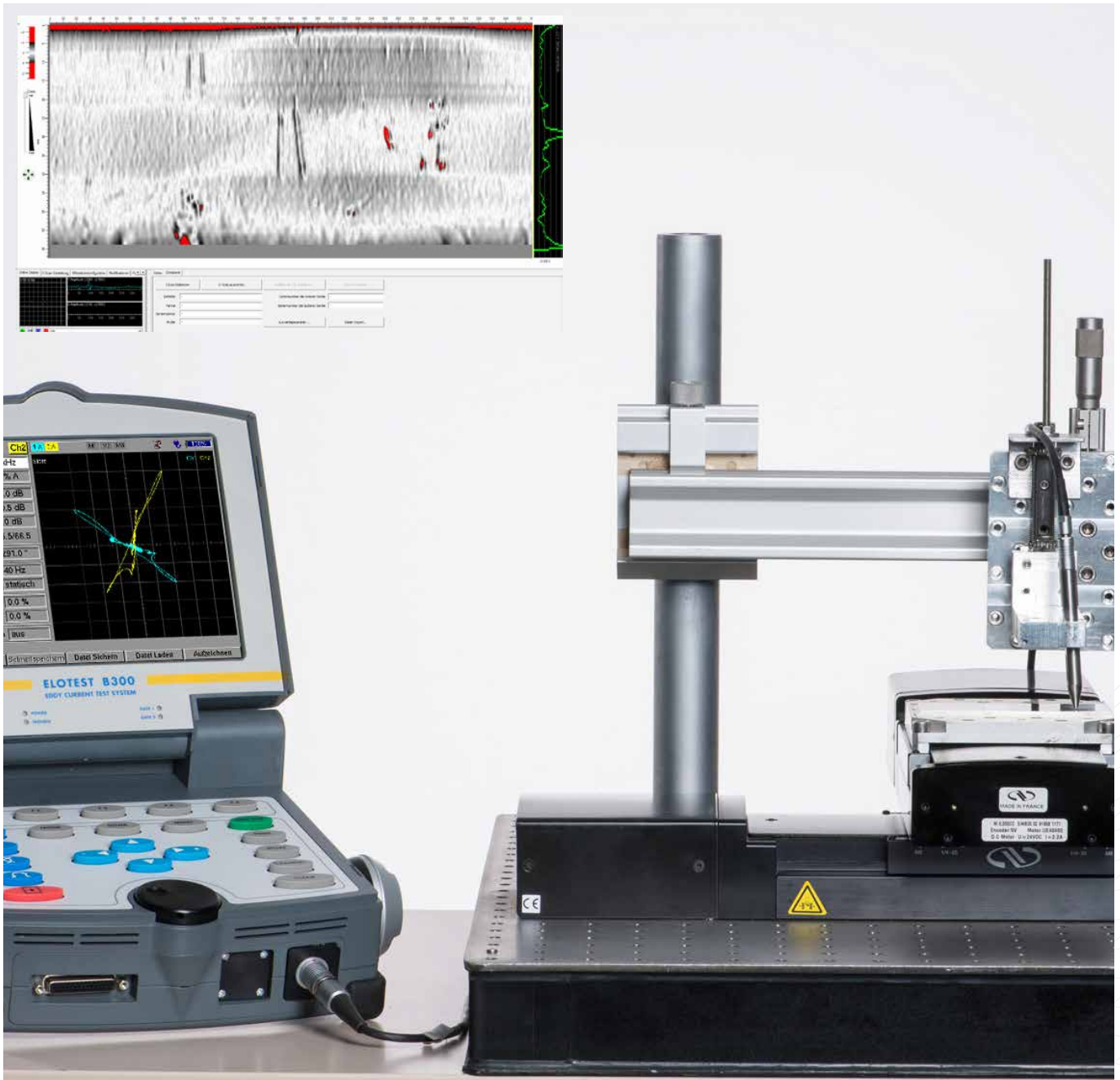
Conductivity test – Measurement of the conductivity of non-ferromagnetic metals and coating thickness measurement



Segment coil with permanent magnets –for inner and outer surfaces of tubes, semi-finished products and Bar inspection with eddy current



Manual inspection of aircraft rims – geometrically adapted sensors with 25 - 100 mm track width possible



ELOTEST B300 in combination with our Scanalyzer software, processing and evaluation of surface scans.

Special features

- ▶ Intuitively operable inspection device for hand-held eddy current sensors, inspection rotors and scanner systems
- ▶ Portable test system for demanding applications, equally suitable for use in the laboratory and test field
- ▶ 24 Volt power supply
- ▶ Standard with C-Scan for bore-hole inspection
- ▶ Multifunctional signal processing, display, mix, analysis, storage and documentation
- ▶ Fast, high-performance interface for bidirectional, digital communication
- ▶ Complete remote operation via included Win-Client software
- ▶ Optional connection for video camera, e.g. endoscope inspection
- ▶ Conductivity and layer thickness measurement, separately switchable bargraph display, sorting threshold setting: positive or negative
- ▶ Compatible with Scanalyzer software running on an external PC (Windows 7)

ELOTEST B300

Technical Data

Device data

- ▶ Up to 4 test channels, frequency 10 Hz - 10 MHz
- ▶ Transmitter driver: dual, 15Vss, max. 250 mA, short-circuit proof
- ▶ Preamplifier 6 dB to 52 dB in 0.5 dB steps
- ▶ Main amplifier 0 dB to 60 dB in 0.5 dB steps
- ▶ Y-axis spread 0 dB to 30 dB in 1 dB steps
- ▶ Phase adjustment 0° to 359.5° in 0.5° steps
- ▶ Signal filter TP/HP; 0 Hz to 10 kHz in 40 steps, separately adjustable, bandpass filter with variable bandwidth

sensor connection

- ▶ Suitable for all sensor types
- ▶ 3-RS adapter, exchangeable
- ▶ Optional 24-pin (Fischer) multi-function plug for use with special sensors with integrated characteristic curve or multi-sensor system (e.g. abs./diff. sensor systems); alternatively second ELOTEST B1 standard adapter socket

Universal Scanner Interface (USI)

- ▶ Multifunctional connection for rotary encoder, analog displacement encoder and digital I/O opt. decoupled

Interfaces

- ▶ Ethernet port (10/100 Mbit/s; RJ45, 100BaseT)
- ▶ RS232 (D-Sub 9) for mouse or external PC (optional)
- ▶ USB port (2x)
- ▶ VGA port for external monitor
- ▶ Parallel printer interface (D-Sub 25)

Display

- ▶ Active TFT colour display with 210 mm (8.4") diagonal, 640 x 480 pixels with integrated LED lighting

Case

- ▶ Impact- and shock-resistant ABS industrial plastic housing
- ▶ Housing cover with built-in display, rotatable by 180°, closed as protection for display and keypad
- ▶ Silicon keyboard with specific direct function keys, cursor block and softkeys
- ▶ Rotary knob for quick parameter setting
- ▶ Integrated, quick-change battery pack

Power supply

- ▶ Fast charging Li-Ion battery with intelligent charging electronics and autonomous battery status display; 5 hours operating time
- ▶ Wide range power supply, external; input 100-250 V/AC 50-60 Hz;
- ▶ Output 24 V/DC; 90 VA

Operating features

- ▶ Automatic preamplifier adjustment
- ▶ Automatic lift-off setting
- ▶ Mix function for multi-frequency applications
- ▶ Waterfall display for dynamic tests

Software

- ▶ C-Scan Software
- ▶ Conductivity measurement (60 kHz, with calibrated special sensors)
- ▶ Layer thickness measurement (60 kHz, with calibrated special sensors)
- ▶ Sensor array multiplex (additional hardware option)
- ▶ Windows remote control software WinClient
- ▶ Scanalyzer software (optional) on external PC (Windows 7)

Device versions

- ▶ ELOTEST B310: Instrument with one test channel; sensors, rotors and cables of the series are compatible to ELOTEST M2/ M3
- ▶ ELOTEST B320: Device with two test channels; signal mix function
- ▶ ELOTEST B330: Device with three test channels; signal mix function
- ▶ ELOTEST B340: Device with four test channels; signal mix function

Dimensions (mm)

- ▶ Length: 370 mm (14.56 inch)
- ▶ Width: 242 mm (9.52 inch)
- ▶ Height: lid closed 95/ 110 mm (3,7/4,3 inch) lid open 300 mm (11,81 inch)

Weight

- ▶ Device without battery: 4,200 g
- ▶ Li-ion battery: 1,450 g

Order number

- ▶ ELOTEST B310 Set ... A0EZ10951010
- ▶ ELOTEST B320 Set ... A0EZ10952010
- ▶ ELOTEST B330 Set ... A0EZ10953010
- ▶ ELOTEST B340 Set ... A0EZ10954010

Set consists of:

- ▶ Test instrument
- ▶ Battery pack Li-Ion B300-BA5 18 V / 9 Ah
- ▶ Mains adapter B300-NT2
- ▶ B3-RS Sensor adapter
- ▶ Carry handle
- ▶ B300 Cordura Nylon protective bag

Individual components on request.

